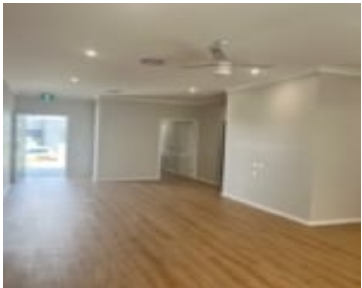
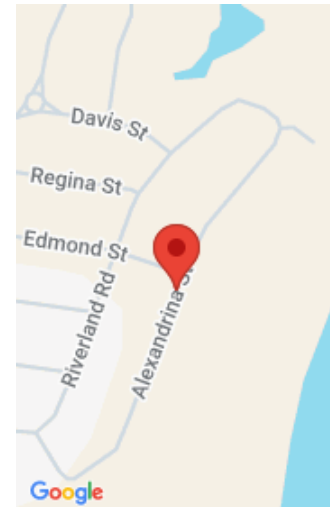


# COOMERA

<https://thedisabilityhousingcentre.com.au>



- 1 bed
- 2 baths
- SDA House
- Shared Accommodation
- 1 Room Left!



2 bed + OOA AVAILABLE NOW High Physical Support, Fully Accessible and Improved Liveability tenants 2 bedroom, 2 bathroom, 2 car garage, High Physical Support home + carer studio in Coomera, halfway between Brisbane and the Gold Coast. This beautifully designed property for people with disability is now available in the vibrant suburb of Coomera, QLD. Nestled in a community known for its family-friendly atmosphere, you'll find an abundance of parks, excellent shopping options, and easy access to public transport. Coomera is celebrated for its welcoming neighbourhood, proximity to the stunning Gold Coast, and a variety of recreational activities that cater to all interests. This property offers a bedroom for rent on an ongoing lease. You can live here by yourself, enjoying your own space while being part of a supportive community. Current tenant: Male (60 years old) He is a friendly and well-mannered individual who brings warmth and positivity to those around him. Known for his courteous nature, he is easy to engage with and enjoys social interaction. Family is an integral part of his life, and he makes regular weekly visits to spend time with his loved ones. These visits are a valued routine that keeps him connected and fulfilled. A non-smoker and non-drinker, he maintains a calm and health-conscious lifestyle. Interests: classic TV programs; spending time with family; engaging in friendly conversation. Support Model Blue Marble Health Services provides support within the home, ensuring you have the assistance you need. The following types of support are offered: Onsite shared support You have the freedom to choose your own core supports, allowing you to tailor your support to suit your needs. Property Features This thoughtfully designed property is wheelchair accessible and features a range of amenities to enhance your living experience: Ensuite bathroom Built-in wardrobes Outdoor area Broadband internet available Pets allowed Local Area Located in the heart of Coomera, this property is just moments away from essential amenities. You will find: Coomera East Shopping Centre just a short distance away The Gold Coast University Hospital is easily accessible Public transport options, including Coomera Train Station and bus stops on Foxwell Road Nearby Foreshore Park and Jetty for leisurely walks and outdoor activities Housemates This property is designed for one resident, making it ideal for someone who enjoys an active and social home, while also appreciating the option for personal time. You may invite friends and family over, or choose to spend time in your own company. Housing Provider This property is brought to you by The Disability Housing Centre, a dedicated organisation committed to helping individuals living with disability find the perfect place to call home. With a focus on superior tenant matching and property management services, they strive to create high-quality SDA housing options that meet your needs. Their friendly team is always ready to assist you in achieving your housing goals. Contact us today! If you find this property appealing, we encourage you to reach out for a discussion. You can ask any questions and receive all the information you need. We promise to respond promptly and welcome you and your supporters to tour the property, ensuring it meets your needs. We look forward to meeting you and helping you discover your new home! Visit our website for full terms and conditions



---

## Amenities & Features

**Features:** A/C heating and cooling, Accessible alfresco, Accessible ensuite to each resident room, Accessible kitchen, Automated blinds, A/C and lights, Carer studio for OOA, Emergency Power Backup - Diesel Generator, Extra wide doorways, Free wi-fi, iSaint Assistive technology, Provision for ceiling hoist, Wheelchair accessible

