

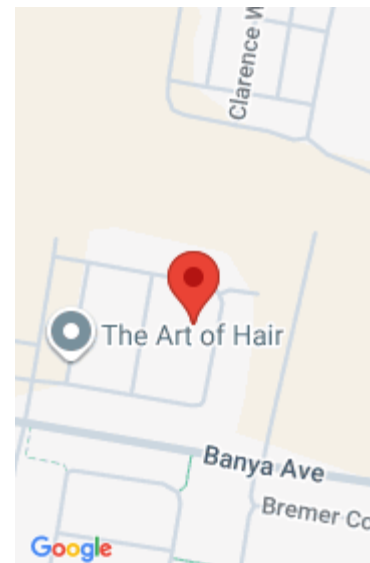
BANYA, SUNSHINE COAST

<https://thedisabilityhousingcentre.com.au>



AVAILABLE NOW FOR High Physical Support, Fully Accessible and Improved Liveability tenants 3 bedroom, 3 bathroom, 2 car garage, High Physical Support home + carer studio Seeking 2 tenants to join our current female tenant in this fantastic home in Banya near Caloundra on the Sunshine Coast. SPECIAL MOVE IN GIFT - 3 months of YouFoodz meals valued at \$100 per week This home has a large open kitchen, living and dining area that leads out onto a delightful pavilion space for outdoor living. From this alfresco area there's easy and safe access to the sizeable backyard and garden, perfect for a veggie patch. Modern finishes feature throughout with superior quality tiling and floor coverings. There's also ducted air conditioning and a 6kW solar panel system to offset electricity costs. Why choose an SDA Smart Home? Our stylish homes are designed for independence, safety and accessibility with high quality finishes and fittings and automation throughout. Key property features include: * iSaint Assistive Technology package with tablet in common area and Alexa Echo dot in each bedroom for automated lights, air conditioning, and blinds and smart power points for automation of any appliance * Accessible bathrooms with hobless shower, pedestal sink and wall reinforcement for handrails * Accessible kitchen with room for wheelchair under bench, adjustable height benchtop and side opening oven * Emergency backup power * Large bedrooms, wide hallways and clear doorways * Large garage and spacious undercover entry * Easy circulation space in living, kitchen, bedrooms, bathrooms and outdoor area * A/C and fans in bedrooms and living room * Non-slip flooring * Quality stainless kitchen appliances * Structural provision for ceiling hoists to bedrooms & ensuites * Security screens to windows Location features include: * Parklands, open spaces and walking paths * Cafes and restaurants * Aura Family Doctors * Aura Farmers Market (Saturdays) * Aldi - 9km * Caloundra Shopping Centre with Coles, KMart, dining, health and beauty, fashion and specialty stores - 10km * Caloundra beaches - 13km __ Inclusions are subject to change without notice due to design requirements that are outside of the control of SDA Smart Homes. All information is accurate at the time of publication. Images indicative only. To find out more about this property or complete an expression of interest, please use the contact form on this page, or email enquiries@thedisabilityhousingcentre.com.au or call Reception 07 3899 3873.

- 3 beds
- 3 baths
- SDA House
- Shared Accommodation
- Vacancy



Amenities & Features



Features: A/C heating and cooling, Accessible alfresco, Accessible ensuite to each resident room, Accessible kitchen, Automated blinds, A/C and lights, Carer studio for OOA, Emergency Power Backup - Diesel Generator, Extra wide doorways, Free wi-fi, iSaint Assistive technology, Provision for ceiling hoist, Wheelchair accessible

